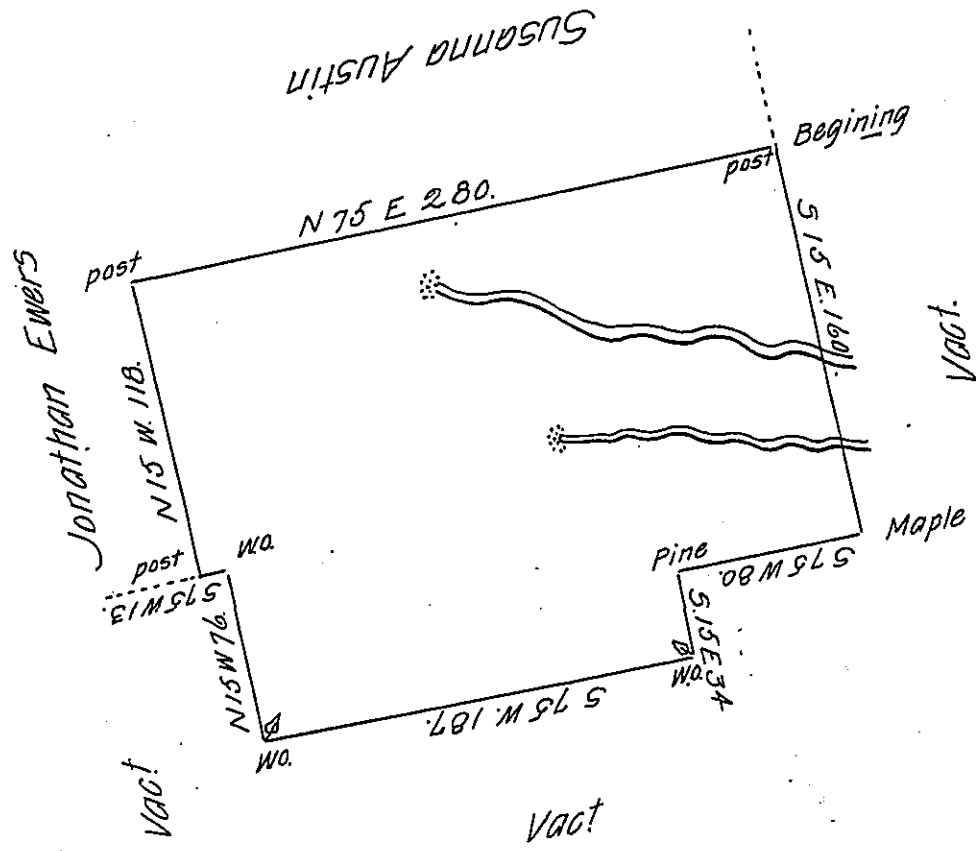


Pg 124



A Draught of a Tract of Land called Meadow-Farm Situate on the South Side the West Branch of the River Susquehanna in the County of Cumberland Surveyed the 20<sup>th</sup> Day of September 1769 unto Elizabeth Lippencott in pursuance of her Application No. 3709 Dated the Third Day of August 1769 Containing Three hundred Acres & allowance of Six Acres P. Cent for Roads &c.

Chas. Lukens D.S.

To John Lukens Esq.  
Surveyr. Genl.

IN TESTIMONY that the above is a copy of the original remaining on file in the Department of Internal Affairs of Pennsylvania, made conformably to an Act of Assembly approved the 16th day of February, 1833, I have hereunto set my Hand and caused the Seal of said Department to be affixed at Harrisburg, this seventeenth day of June 1905.

*Isaac B. Brown*  
Secretary of Internal Affairs.